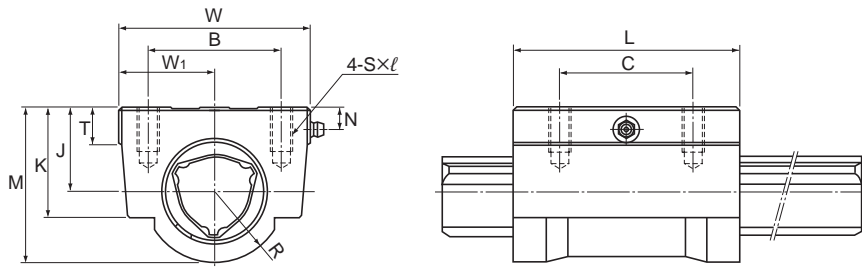


Model LBH



| Model No. | Spline nut dimensions | | | | | | | | | |
|-----------|-----------------------|------------|-------------|----|----|--------|------------|-------------------------|----|----|
| | Height M | Width W | Length L | B | C | S × l | J ±0.15 | W ₁ ±0.15 | T | K |
| ○ LBH 15 | 29 | 34 | 43 | 26 | 26 | M4×10 | 15 | 17 | 6 | 20 |
| ○● LBH 20 | 38 | 48 | 62 | 35 | 35 | M6×12 | 20 | 24 | 7 | 26 |
| ○● LBH 25 | 47 | 60 | 73 | 40 | 40 | M8×16 | 25 | 30 | 8 | 33 |
| ○● LBH 30 | 57 | 70 | 83 | 50 | 50 | M8×16 | 30 | 35 | 10 | 39 |
| ○● LBH 40 | 70 | 86 | 102 | 60 | 60 | M10×20 | 38 | 43 | 15 | 50 |
| ○● LBH 50 | 88 | 100 | 115 | 75 | 75 | M12×25 | 48 | 50 | 18 | 63 |

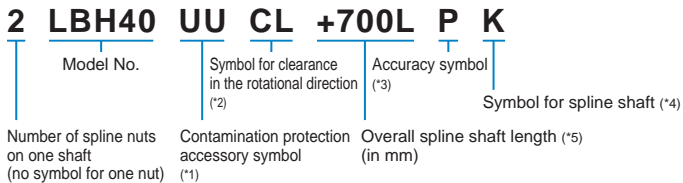
Note) ○: indicates model numbers for which high temperature types are available (with metal retainer; service temperature: up to 100°C).

(Example) LBH30 A CM+600L H

└ High temperature symbol

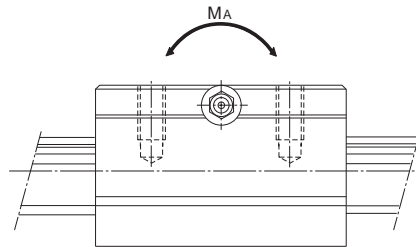
●: indicates model numbers for which felt seal types are available (see **A3-120**).
A felt seal cannot be attached to Ball Spline models using metal retainer.

Model number coding



(*1) See **A3-120**. (*2) See **A3-30**. (*3) See **A3-34**. (*4) See **A3-69**. (*5) See **A3-115**.

High Torque Type Ball Spline



Ball Spline

Unit: mm

| | | | | Basic torque rating | | Basic load rating (radial) | | Static permissible moment M_A^{**} N-m | Mass | |
|----|------|-----------------------|--------------|---------------------|---------|----------------------------|------------------|--|----------------------|--|
| R | N | Grease nipple | C_T N-m | C_{OT} N-m | C kN | C_0 kN | Spline Nut kg | | Spline shaft kg/m | |
| 14 | 5 | $\phi 4$ drive Nipple | 30.4 | 74.5 | 4.4 | 8.4 | 25.4 | 0.23 | 1 | |
| 18 | 7 | A-M6F | 90.2 | 213 | 9.4 | 20.1 | 103 | 0.58 | 1.8 | |
| 22 | 6 | A-M6F | 176 | 381 | 14.9 | 28.7 | 171 | 1.1 | 2.7 | |
| 26 | 8 | A-M6F | 312 | 657 | 22.5 | 41.4 | 295 | 1.73 | 3.8 | |
| 32 | 10 | A-M6F | 696 | 1420 | 37.1 | 66.9 | 586 | 3.18 | 6.8 | |
| 40 | 13.5 | A-PT1/8 | 1290 | 2500 | 55.1 | 94.1 | 941 | 5.1 | 10.6 | |

Note) M_A^{**} indicates the permissible moment value in the axial direction when a single spline nut is used, as shown in the figure above.

For details on the maximum lengths of ball spline shafts by accuracy, please see **A3-115**.